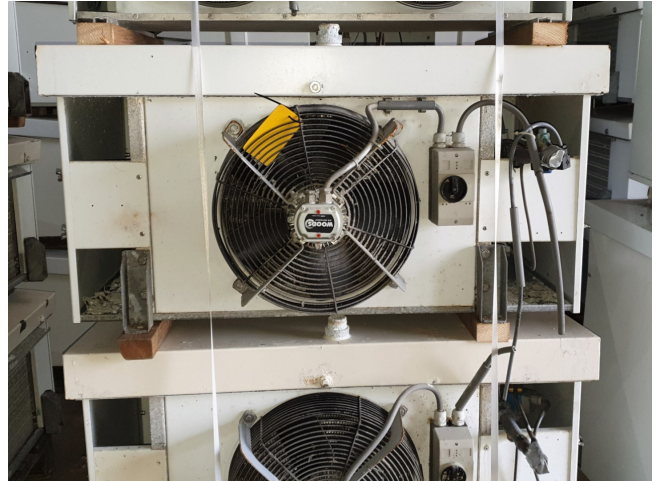


# Goedhart VCB 61407

## Specifications

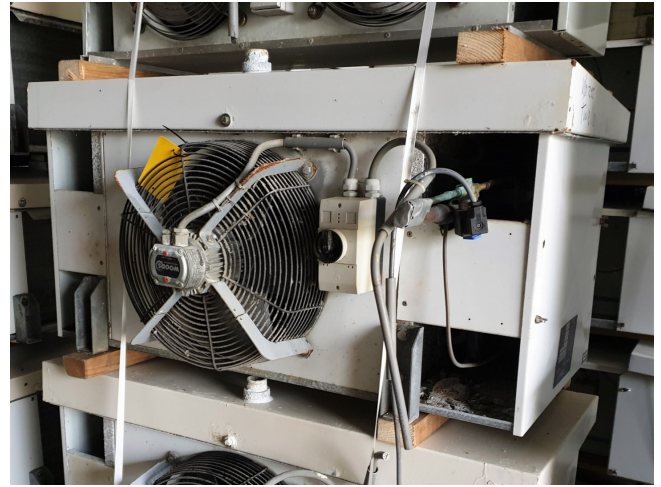
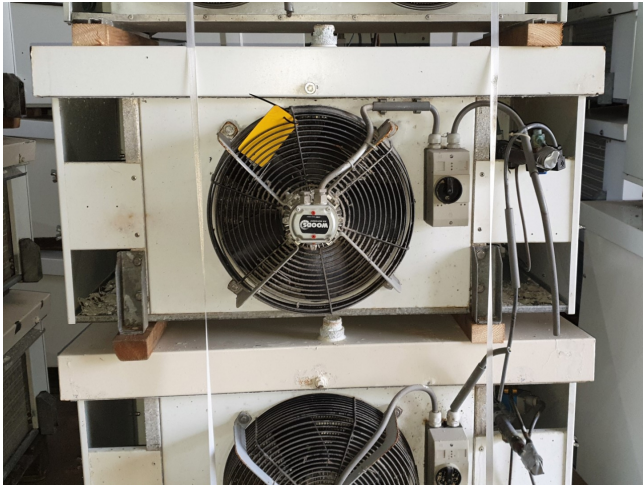
Merk	Goedhart
Type	VCB 61407
Capaciteit kW	5,1
Koudemiddel	Freon
Aantal Ventilatoren	1
Lamel afstand in mm	7
Ontdooiing	None
m <sup>3</sup> /h	3285
Afmetingen	1160x730x580 mm
Opmerkingen	Y.o.b. 1997
Remarks	Surface 33 m <sup>2</sup>
Volume	10,0 dm <sup>3</sup>
Gewicht	75 kg
Stock	2



## Description

### Used Goedhart VCB 61407

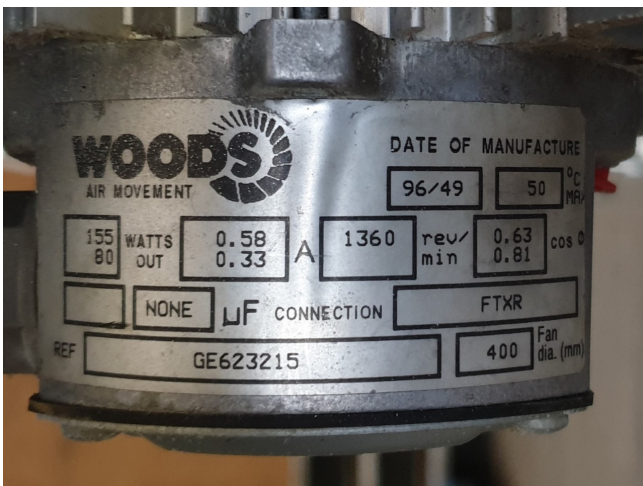
Used blow-through Goedhart VCB 61407 evaporator with a Woods fan 1360 RPM. Min. workingtemp. -5°C max. 43°C. \*All components of this used evaporator will be tested on good working, leak free condition (electro engines), coils, bearings) Choosing HOSBV means buying with warranty. We perform a industrial cleaning and rust spots will be covered. Also, we can arrange your shipment.



**SINT - MAARTENSDIJK HOLLAND**

Tel. nr. : (+31) 166.66 28 50  
Fax. nr. : (+31) 166.66 36 98

Type : VCB 61407  
Manufacturingno. : 97-4190-040  
Build in year : 1997  
Medium : R404A  
Testpressure : 30 bar  
Min. workingtemp. : -15 °C  
Max. workingtemp. : 43 °C  
Max. workingpress. : 19.5 bar  
Tubevolume : 10 dm<sup>3</sup>  
Mass (empty) : 75 kg



**WOODS AIR MOVEMENT**  
DATE OF MANUFACTURE : 96/49 50 °C MPV  
155 WATTS OUT 0.58 0.33 A 1360 rev/min 0.63 0.81 COS φ  
NONE μF CONNECTION FTXR  
REF GE623215 400 Fan dia. (mm)

Lamelafstand / Finspacing													7 mm									
Type	Type				Atmetingen				Aansluitingen				Elektrische aansluiting									
Model	Watt	Vol	Rev	Watt	Vol	Rev	Watt	Vol	Rev	Watt	Vol	Rev	Watt	Vol	Rev							
8.1.402 1x	5.8	4.8	3306	53	80	1156	870	620	700	786	878	12	22	19	2.08	4.81	20					
8.1.407 0400	6.4	4.8	3147	44	11	98	1156	870	620	700	786	12	22	19	3.45	6.13	20					
8.1.457 1x	7.7	5.7	4986	45	15	97	1256	770	720	600	856	12	22	19	3.96	5.32	25.5					
8.1.457 0400	9.2	7.0	4754	61	16	116	1256	870	720	700	856	12	22	19	4.85	7.11	25.5					
8.1.507 1x	10.3	7.9	7078	57	15	120	1456	990	720	800	1056	12	22	19	4.49	6.04	25					
8.1.507 0500	12.4	9.4	6798	76	19	143	1456	990	720	800	1056	12	22	19	5.65	8.09	25					
8.1.567 1x	16.1	11.1	10595	84	21	166	1556	1010	800	900	1156	12	22	19	6.18	8.10	27.5					
8.1.567 0500	18.5	12.7	9884	112	28	193	1556	1110	800	900	1156	12	22	19	11.42	17.5	27.5					
8.1.637 1x	19.7	14.8	12734	114	29	206	1656	1010	1120	900	1256	16	35	19	8.11	10.06	27.5					
8.1.637 0800	23.4	17.9	12384	152	38	243	1656	1110	1120	900	1256	16	35	19	11.34	13.91	27.5					